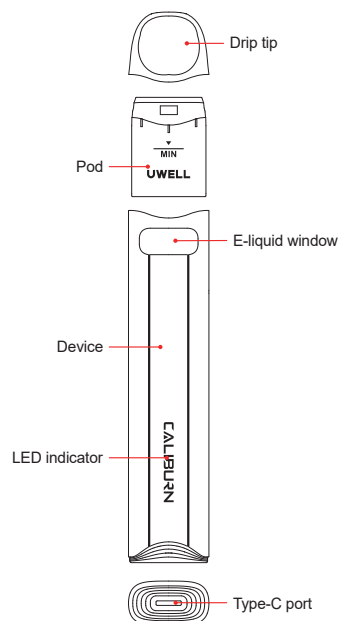


CALIBURN

CALIBURN A3S Pod System

User Manual

Illustration



Quick Guide

1. Take off the pod, remove the insulating film from the bottom of the pod, and put the pod back.
2. Remove the drip tip from the pod, fill with e-liquid through the filling port, and put the drip tip back.
3. Let the product sit for 10 minutes. Draw to vape.

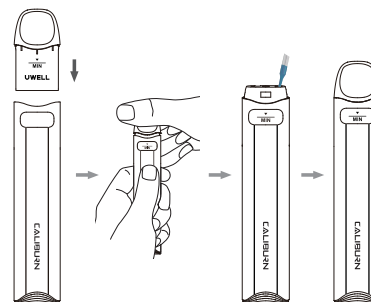
Specifications

- Materials: PCTG, Aluminum Alloy
- Dimensions: 109.8 mm × 21.3 mm × 11.7 mm
- Net Weight: 32 g
- E-liquid Capacity: 1.8 ml
- Output Power: Maximum 16 W
- Pod Specifications:
 - FeCrAl Meshed 0.8 Ω CALIBURN A3 Refillable Pod (pre-installed)
 - FeCrAl Meshed 1.0 Ω CALIBURN A3 Refillable Pod (spare)
- Battery Capacity: 520 mAh

Instructions

1. Pod filling and pod replacement

- a. Take the pod off the new device, remove the insulating film from the bottom of the pod, and put the pod back.
- b. Remove the drip tip as the following graphic shown.
- c. Fill with e-liquid through the red filling port. Put the drip tip back, and the clicking sound hints at proper installation.
- d. Let the product sit for 10 minutes.
- e. For pod replacement, please remove the used pod from the device and install a new one back.



UWELL

©2023 By SHENZHEN UWELL TECHNOLOGY CO., LTD.
All Rights Reserved.

Attention:

- a. Please fill with e-liquid through the filling port, but not the airway in the middle. Put the drip tip back as soon as the filling is done to prevent e-liquid leakage.
- b. After the first e-liquid filling, please let the pod sit for 10 minutes to avoid coil burning.
- c. Please make a timely refilling when the e-liquid is under the MIN level.

2. Vaping

Draw to vape when the device is powered on, and the LED indicator will light up like water waves. When vaping stops, the LED indicator will gradually go out from the bottom up.

3. Battery level indication

During vaping, a green light indicates a more than 60% battery level, a blue light indicates a 30%~60% battery level, and a red light indicates a less than 30% battery level.

4. Charging

The indicator lights up when connecting the Type-C cable properly. The indicator light flashes in red to indicate low battery power, flashes in blue to indicate medium battery power, and flashes in green to indicate sufficient battery power. The green light stays on when the charging is done.

5. Protection and Indication

- a. Short-circuit protection: When short-circuit occurs, the indicator light flashes 3 times in red, and the device will stop output.
- b. Low voltage protection: When the power is low, the indicator light flashes 10 times in red, and the device will stop output.
- c. Overtime protection: The indicator light flashes 5 times in green to indicate an over 8-second vaping, and the device will stop output.
- d. Open-circuit protection: When an open-circuit occurs under a no pod or disconnection situation, the indicator light flashes 3 times in blue, and the device will stop output.

Warm Tips

1. Please charge with the certified power adaptor (5V/2A) and USB cable.
2. Please remove the pod from the device and store it separately when you travel by air, for the air pressure change may cause leakage.
3. Avoid high temperature, low temperature, flammables, explosives, water, and humid environment during the use or storage of the product. Please do not keep the product with hard objects to avoid damage. Please charge the device at least once a month.

WARNING

The new FDA regulations apply to the sales and distribution of all E-cig products.

1. Do not give away free samples.
2. It is prohibited to sell all types of E-cig products to people under the age of 21.
3. It is prohibited to sell all types of E-cig products in vending machines except those specified by laws and regulations.
4. It is prohibited to introduce products with "light", "low", "mild", or other similar descriptions in labels or advertisements into interstate trade.
5. It is strictly forbidden to be used by young children, pregnant women, and women during breastfeeding or patients with heart disease, hypertension, diabetes, depression, and asthma. Keep the product out of the reach of children, non-smokers, and animals.
6. Please do not drink it.
7. It may contain nicotine, which is known to be a highly addictive substance.
8. Swallowing or skin contact with this product may cause intoxication.
9. Please keep away from flammables and explosives when using or charging to avoid hazards.
10. Do not disassemble the product. The company won't be responsible for any product damage or personal injury caused by the improper operation.
11. Please consult your local vape shop or contact us through service@myuwell.com if you need help using the product.

Product Verification

- Visit UWELL's official website www.myuwell.com to verify under the SUPPORT navigation bar.
- Please scan the QR code on the package with your phone camera to verify. The result will be displayed on the page.

- Or you can enter the 16-bit anti-counterfeit code on the surface of the user manual into the input box, and the result will be displayed within seconds.

Attention:

Please keep your package and the warranty card.

Warranty Period

180 days from the purchasing date.

Warranty Parts

Device and atomizer only. Coil and pod are excluded.

Warranty Service Excluded Conditions

1. Expiration of warranty period.
2. Damage caused by failure to use, maintain and keep the product according to the requirements of the product instructions.
3. Damage caused by maintenance service personnel non-authorized by UWELL.
4. Damage caused by using inferior accessories of other brands.
5. Damage caused by the force majeure.

Warranty Service Guide

1. You can ask the shop you purchased your vaping device for the warranty service.
2. You can visit www.myuwell.com and ask for warranty service under the SUPPORT navigation bar.
3. You can contact us through service@myuwell.com if you have any questions.

Please use your phone camera to scan the QR code for further information.

